

2015



NETZOOM PRO CLASSROOM TRAINING

By Altima Technologies, Inc.

This brochure explains the training structure for NetZoom & NetZoom Pro.



ALTIMA
TECHNOLOGIES, INC.

Altima Technologies, Inc.
2300 Cabot Drive, Suite 535
Lisle, IL 60532

P: 630.281.6464 | Sales@NetZoom.com | www.NetZoom.com

Copyright © 2015 by Altima Technologies, Inc.

NETZOOM PRO CLASSROOM TRAINING	2
HOW DO YOU BENEFIT FROM NETZOOM PRO CLASSROOM TRAINING?	3
NETZOOM PRO CLASSROOM TRAINING PROGRAM OVERVIEW	4
Objective	4
Course Type	4
Requirements	4
Receivables	4
Location	4
Infrastructure	4
Trainers	4
What's Included with a NetZoom Classroom Training:	4
NETZOOM PRO SYSTEM REQUIREMENTS	5
NetZoom Pro Training Syllabus	7
NETZOOM PRO TRAINING PRICING	10
Client Site Training	10
LEARN MORE ABOUT NETZOOM PRODUCTS!	11

NetZoom Pro Classroom Training

NetZoom Pro enables users to perform all of their Microsoft® Visio data center and network tasks in one convenient application. The application helps network and data center professionals to collaborate together to discover, design, document, and diagram with ease.

NetZoom Pro helps professionals manage their assets, as well as design and document the physical infrastructure of their networks and data centers. NetZoom Pro includes a variety of automation tools and productivity tools that allow you to manage your assets with ease. Replicate your data center exactly using the World's Largest Device Shapes Library containing more than 400,000 shapes. Take control of your assets and visualize your current network, or even future ideas, by creating high-quality, professional diagrams and reports including floor layouts and detailed rack elevations.

Model your racks and equipment to exactly match their real life counter parts, down to modeling port to port connectivity of your devices. Modeling connectivity enables users to track the port connectivity of both power and data in your data center and also generate a range connectivity reports for reporting, installation, or troubleshooting purposes

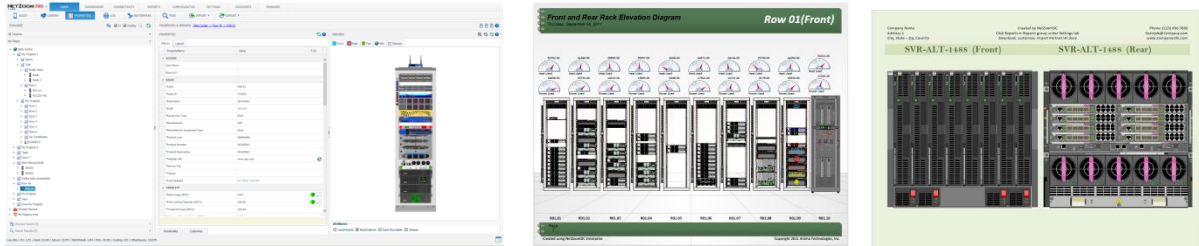
We encourage you to take advantage of the NetZoom Pro Classroom Training to gain a better perspective of NetZoom Pro and how your organization can benefit the most from its exciting features.

Participating in the Classroom Training will not only teach you about NetZoom Pro and its many features, but it will also show you how to implement NetZoom Pro in your environment for the best return-on-investment. Classroom training will also teach you how to optimally discover, design, diagram, and document your networks and data center using our product.

The NetZoom Pro Classroom Training is a three day training course which includes lectures and labs. The training lasts from 8:30 AM to 5:30 PM, on the dates of your choice. Training can take place at either our Altima Technologies facilities in Lisle, IL or at a client specified site. Training will be provided by NetZoom certified trainers. Training is organized and charged for up to five attendees or in multiples of five. Additional attendees will be charged on a per person basis, or in multiples of five. Upon the completion of the training course, participants will receive NetZoom Pro certification along with a workbook and other resource files.

You must register for training and schedule the training with us at least two weeks in advance, and registration must be secured with a credit card. Cancellations must be made one week prior to the training date for a refund.

How Do You Benefit From NetZoom Pro Classroom Training?



After attending NetZoom Pro Classroom Training you'll be able to:

- Implement NetZoom for Data Center Infrastructure Asset Management
- Discover and monitor your networks
- Work with NetZoom as a stand-alone application or use it directly from within Visio
- Accurately Model all of your power and data connections down to the port level
- Generate professional reports for your network
- Create Microsoft Visio diagrams of your data centers and rack elevations
- Find and model you desired hardware shapes from the NetZoom Library to collect your asset inventory
- Update your NetZoom library from local files or use our extensive cloud library
- Use your existing spreadsheets and diagrams with NetZoom
- Use NetZoom to model your Zero-RU, Reverse Mounted, and Top of rack devices
- Personalize and create your own library of favorite shapes using customized hardware equipment shapes that match their real-life configurations
- Manage custom properties, data, and other information for your data center and network assets to track them
- Take advantage of our complimentary shape creation services
- And much more...

For more information on NetZoom classroom training or pricing, or to sign up for training, please call 630.281.6464 (8:30 AM – 5:30 PM Monday – Friday US CST) or e-mail us at Support@NetZoom.com.

*Note from Nick Albano – Senior Manager of Professional Services:

“We pride ourselves on delivering exceptional training and services; My aim for users that attend our trainings is to give you the tools and training that you'll need to equip yourself to stay on top of managing assets and infrastructure in a constantly changing IT environment.”

Though the training you'll develop the confidence you need to tackle even the biggest projects, you'll also develop a valuable relationship with your trainer that you'll be able to leverage going forward to answer any questions that come up, or to get guidance on best practices to approach a difficult project.”

NetZoom Pro Classroom Training Program Overview

Objective

Attendees will master how to use NetZoom Pro for network or data center management, how to discover and monitor networks, and how to generate professional reports and diagrams.

Course Type

Three Day Training including Labs (8:30 AM – 5:30 PM, dates as specified by client).

Requirements

Each participant is expected to bring a computer or notebook with all prerequisite software pre-installed and sufficient disk space available to install and run the product. You must also bring your subscription number with you. Proficient knowledge of Microsoft Visio and Microsoft Excel is recommended.

If the training is provided at the Client site, you must also provide a high speed internet connection for the trainer

Receivables

Participants will be provided a workbook and a flash drive with necessary files. A copy of the workbook and presentation will also be provided. Upon completion of the NetZoom training program, participants will receive NetZoom Pro Certification.

Location

The location of the training is your choice, Altima Technologies, Inc. can host the training at our facilities in Lisle, IL, or a NetZoom certified trainer can travel to a location of your choosing.

Infrastructure

If the training is provided at Altima Technologies, Inc. in Lisle, IL, the following infrastructure will be available:

- Training Lab
- Internet Connection

If the training is located at a Client site, this infrastructure must be provided by the client as it's required for the training.

Trainers

All trainers are NetZoom Certified Trainers.

What's Included with a NetZoom Pro Classroom Training

Upon completion of the training program, participants will receive NetZoom Certification. Participants will be provided a workbook and a flash drive with necessary files. Participants will receive NetZoom Polo styled shirts.

NetZoom Pro System Requirements

Ensure that the following prerequisites are met by your workstation before installing NetZoom.

NetZoom Pro Server

Supported Operating Systems*

- Microsoft Windows Server 2008 R2 SP1 (64 bit)
- Microsoft Windows Server 2012 (64)

Supported Microsoft SQL Server*

- Microsoft SQL Server 2012 SP2 Express Advanced
- Microsoft Server 2012 SP2
- Microsoft SL Server Compact Edition 3.5 SP2

Hardware

- Intel Multi-Core Processor 2GHz+
- 8 GB RAM +
- 40 GB Hard Disk +
- 1024x768 Resolution Monitor +

Software*

- IIS 7.5 or 8.0 with ASP, .NET Features Enabled (component of Microsoft Windows)
- Microsoft SQL Server Reporting Services (components of Microsoft SQL Express Advanced)
- SQL Full-Text Indexing Enabled (component of Microsoft SQL Express Advanced)
- Microsoft Visual C++ 2010 Redistributable (Free download from Microsoft)
- Microsoft .NET Framework 4.5+ (Free download from Microsoft)
- Microsoft Office Access Database Engine 2010 x64 (free download from Microsoft)

Other

- SQL Instance Name
- SMTP Server access (for e-mail)
- High speed, low latency LAN connection with Broadband Internet Connection
- NetZoom Pro Website URL/IP
- Subscription number
- SSL Certificate for IIS

NetZoom Pro Web Browser Client

Supported Operating Systems*

- Microsoft Windows 7 SP1 (32 bit or 64 bit)
- Microsoft Windows 8 (32 bit or 64 bit)
- Microsoft Windows 10 (32 bit or 64 bit)
- Apple OS X

Hardware

- Intel Multi-Core Processor 2.5 GHz+
- 8 GB RAM +
- 40 GB Hard Disk +
- 1024x768 Resolution Monitor +

Supported Web Browsers*

- Microsoft Internet Explorer 9.0** (Windows) – Disable Compatibility View Settings.
- Microsoft Internet Explorer 10.0** (Windows)
- Microsoft Internet Explorer 11.0** (Windows)
- Microsoft Edge 20.1+
- Google Chrome 15+ (Windows & Mac)
- Mozilla FireFox 8+ (Windows)
- Opera 11.1+ (Windows)
- Apple Safari 5.1+ (Windows & Mac)

Other

- High Speed Broadband Connection to NetZoom Pro Server
- Subscription number
- NetZoom Pro Website URL/IP
- Set the client URL as a Trusted Site with pop-ups allowed.

NetZoom Pro Web Browser Client with ActiveX (Required for Visio Diagramming)

Supported Operating Systems*

- Microsoft Windows 7 SP1 (32 bit or 64 bit)
- Microsoft Windows 8 (32 bit or 64 bit)
- Microsoft Windows 10 (32 bit or 64 bit)

Hardware

- Intel Multi-Core Processor 2.5 GHz+
- 8 GB RAM +
- 40 GB Hard Disk +
- 1024x768 Resolution Monitor +

Software

- Microsoft Visual C++ 2010 Redistributable (free download from Microsoft)
- Microsoft .NET Framework 4.5+ (free download from Microsoft)
- Microsoft Internet Explorer 9.0+ or other compatible browser

Supported Web Browsers*

- Microsoft Internet Explorer 9.0** (Windows) – Disable Compatibility View Settings.
- Microsoft Internet Explorer 10.0** (Windows)
- Microsoft Internet Explorer 11.0** (Windows)

Additional Software*

- Microsoft Visio Professional 2007, 2010, or 2013 (32 bit or 64 bit) - Required for Visio diagramming
- Microsoft Excel 2007, 2010, or 2013 (32 or 64 bit) – Required for Excel Reporting and imports
- Microsoft Word 2007, 2010, or 2013 (32 or 64 bit) – Required for viewing Word report exports
- Adobe Reader 9.4+ - Required for viewing PDF report exports

Other

- High Speed Broadband Connection to NetZoom Pro Server
- Subscription number
- NetZoom Pro Website URL/IP
- Set the client URL as a Trusted Site with pop-ups allowed.
- ActiveX settings

NetZoom Pro Training Syllabus

DAY ONE

LAB 1 – GETTING STARTED

Prerequisite:

Resources: NetZoom Pro Subscription Number, Internet Connection

Topics: Introduction to NetZoom Pro (Discussion)
Prerequisites (Discussion)
Download Files and Install (Demonstration & Lab)
Activate (Demonstration & Lab)

LAB 2 – NETZOOM PRO QUICK OVERVIEW

Prerequisite:

Resources:

Topics: NetZoom Pro Interface and Panes (Discussion)
Support Options (Demonstration)
Settings and Options (Discussion)

LAB 3 – USING THE NETZOOM LIBRARY

Prerequisite:

Resources: NetZoom Library

Topics: What is the NetZoom Library (Discussion)
Update Library and Use Library from Remote Server (Demonstration & Lab)
Search Library & Find Results (Demonstration & Lab)

LAB 4 – PROJECT EXPLORER

Prerequisite: Hands on knowledge of Microsoft Excel

Resources: SmallDataCenter.xlsx, Location.map, Row.map, Sample Diagram Import 1.vsd, Sample Diagram Import 2.vsd

Topics: What is a Project Explorer? (Discussion)
Manually Build a Network or Data center (Demonstration & Lab)
Top of Rack and Zero RU device mounting (Demonstration & Lab)
How to Prepare Spreadsheets for Import (Demonstration & Lab)
Import from Spreadsheet and Diagrams (Demonstration & Lab)
Auto-Generate Reports, Diagrams, Layouts (Demonstration & Lab)
Search Data Center for Equipment (Demonstration & Lab)
Watermark Creation and Application (Demonstration & Lab)

QUESTIONS & ANSWERS

DAY TWO

LAB 5 – CONFIGURATOR

Prerequisite:

Resources:

Topics: What is a Configurator?	(Discussion)
Manage Favorite Equipment Shapes	(Demonstration & Lab)
Configure Racks and Devices	(Demonstration & Lab)
Search and Use Favorite Shapes	(Demonstration & Lab)

LAB 6 – PROPERTIES & DATA

Prerequisite:

Resources:

Topics: Properties Grid and Previews	(Discussion & Demonstration)
Create Custom Properties	(Demonstration & Lab)
Customize Data Display	(Demonstration & Lab)
Using Watermarks	(Demonstration & Lab)
Manage Notes	(Demonstration & Lab)
Manage Reminders	(Demonstration & Lab)

LAB 7 – DASHBOARD

Prerequisite:

Resources:

Topics: What Do We Have Dashboard	(Demonstration & Lab)
How Are We Doing Dashboard	(Demonstration & Lab)

LAB 8 – CONNECTIVITY

Prerequisite:

Resources:

Topics: Data Connections	(Demonstration & Lab)
Power Connections	(Demonstration & Lab)
Reporting	(Demonstration & Lab)
Diagrams	(Demonstration & Lab)
Power and Data Trace	(Demonstration & Lab)

LAB 9 – FILTERS AND LOGS

Prerequisite:

Resources:

Topics: Tenants	(Demonstration & Lab)
Filters	(Demonstration & Lab)
Log	(Demonstration & Lab)

QUESTIONS & ANSWERS

DAY THREE

LAB 10 – NETWORK DISCOVERY

Prerequisite: A prepared network will be required if training is on client site.

Resources:

Topics: Prepare Network for Discovery	(Discussion)
Define and Discover Network	(Demonstration & Lab)
Manage Network	(Demonstration & Lab)
Explore and Read Network	(Demonstration & Lab)
Search Network	(Demonstration & Lab)
Network Reports	(Demonstration & Lab)
Monitor Network Devices	(Demonstration & Lab)
Use Network Devices in Projects	(Demonstration & Lab)
Monitor Network Devices in Project	(Demonstration & Lab)

LAB 11 – REPORTS AND DIAGRAMS

Prerequisite:

Resources:

Topics: What are Reports and Diagrams	(Discussion)
Reports	(Demonstration & Lab)
Physical Layouts	(Demonstration & Lab)
Rack and Row Diagrams	(Demonstration & Lab)
Report Builder Wizard	(Demonstration & Lab)

LAB 12 – DASHBOARD

Prerequisite:

Resources:

Topics: What Do We Have Dashboard	(Demonstration & Lab)
How Are We Doing Dashboard	(Demonstration & Lab)

LAB 13 – MANAGER

Prerequisite:

Resources:

Topics: Roles	(Discussion)
Role Based Security	(Demonstration & Lab)
Update and Export	(Demonstration & Lab)
Subscription Maintenance	(Discussion)

LAB 14 – CONCLUSION

Prerequisite:

Resources:

Topics: Services	(Discussion)
Backup and Uninstall	(Demonstration & Lab)

NetZoom Pro Training Pricing

Client Training

Training sessions are organized and charged for multiples of five personnel.

Per instructor, per day, including travel days if applicable	Attendance	Any additional attendance
USD \$1200*	Up to 5	USD \$500 per person per day

*Additional charges will apply for out-of-pocket expenses such as travel, hotel, etc.






Learn more about NetZoom Products!

NetZoom is our classic single user software application for the Microsoft windows platform. It is popular among hundreds of thousands of data center and network professionals who use it daily to manage IT assets and also use it as an Add-On to Microsoft Visio to create professional network designs, diagrams, rack elevations and floor layouts. This product fills the need for small data centers, Server rooms, data closets, IT rooms and departmental IT rooms.

NetZoomDC is the most feature rich, fully-scalable, enterprise Data Center Infrastructure Management (DCIM) software. It enables data center professionals to Model, Manage, Monitor, and Maximize data center assets, space, power, and cooling.

NetZoomDC empowers users with real-time insight into the management of the data center by answering the core questions "What is in your data center?", "How is your data center operating?", "What can be optimized?" and "Where is your data center heading?"

Comparison Summary			
Product			
Collaborative Users	Single user	Team/Multi-User	Enterprise/Multi-User
Number of Racks & Cabinets	50	50 per User	Unlimited
Number of Physical Data Centers	1	1	Unlimited
Application Platform	MS Windows Application	Browser/Web-Application	Browser/Web-Application
Configure Devices with Cards & Modules	✓	✓	✓
Port Connectivity Management	✓	✓	✓
Agentless Discovery of Devices	✓	✓	✓
Auto-Diagram Rack Elevations in Visio	✓	✓	✓
Inventory Collection & Audit		✓	✓
Dashboards & Advanced Reporting		✓	✓
Move, Add & Change Management			✓
Power & Thermal Management			✓
Real-Time Monitoring & Alerts			✓
Trends, Forecasting & What-If Analysis			✓
Integrates with popular CMDB, Hypervisor & other Applications			✓